

APPARTEMENT
A.3 v.2

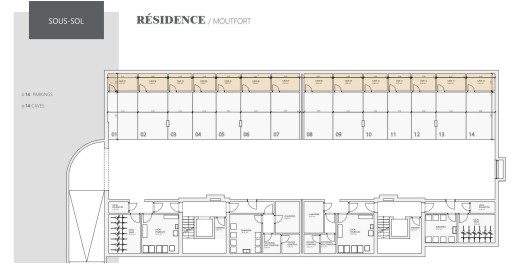
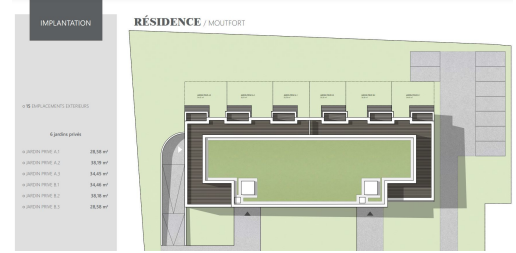
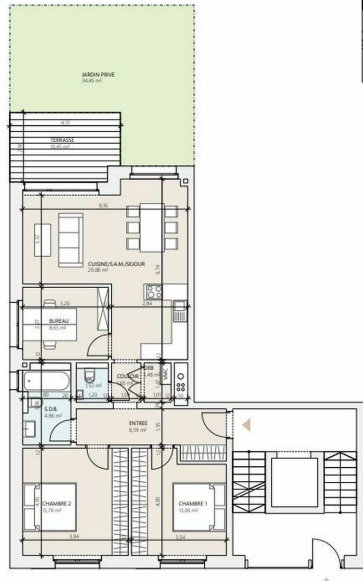
85,40 m²
surface habitable

2 chambres | 1 jardin privé | 1 terrasse

- ENTREE 8,59 m²
- CHAMBRE 1 13,06 m²
- CHAMBRE 2 15,76 m²
- SALLE DE BAIN 4,86 m²
- COULOIR 1,60 m²
- WC 1,52 m²
- DEBARRAS 1,48 m²
- BUREAU 8,65 m²
- CUISINE/S.A.M./SEJOUR 29,88 m²
- JARDIN PRIVÉ 34,45 m²
- TERRASSE 10,45 m²

RDC

RÉSIDENCE / MOUTFORT



DESCRIPTION OF THE PROPERTY

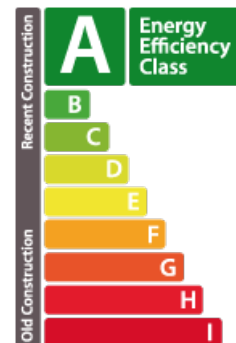
HD33 Real Estate Luxembourg offers you, in collaboration with Capelli S.A., this magnificent 2-bedroom off-plan apartment in Moutfort in a green and quiet countryside environment. Construction work in progress, actable immediately. Dino Backes +352 661 333 370 CONTACT@HD33.LU Apartment A3 with 2 park spaces it is located on the ground floor in the "West Valley" residence with an area of approximately 85.40 m² and distributed as follows:- Entrance hall of approximately 8.59 m²;- A kitchen open to the living room of approximately 29.88m² giving access to the terrace of approximately 10.45m², facing South-West;- A bedroom of approximately 13.06m²;- A second bedroom of approximately 15.76 m²;- A separate bathroom of approximately 4.86 m²;- A corridor of approximately 1.60 m²;- A separate toilet of approximately 1.52 m²;- The apartment also has a private garden facing south of approximately 34.45 m². Turfing and delimitation of private parts by hedges, included in the sale price. In the basement o...

SPECIFICATIONS

Number of pieces : -
Nb. of bedroom(s) : 2
Area : 85.4m²
Number of bathrooms : 1
Equipped kitchen : Non

ENERGY PASS

Energy performance



Thermal insulation



✓ Huyghe - Dubois Sàrl

📍 53, Boulevard Royal - 2nd Floor 2449

📞 284 825 086

✉ contact@hd33.lu

🌐 <https://www.hd33.lamano.lu/en/detail-274>