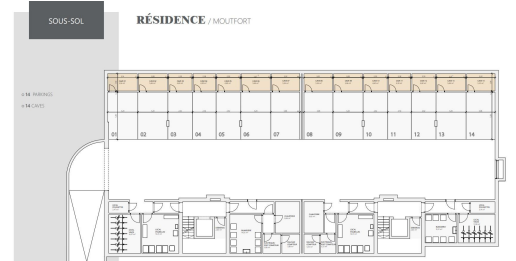
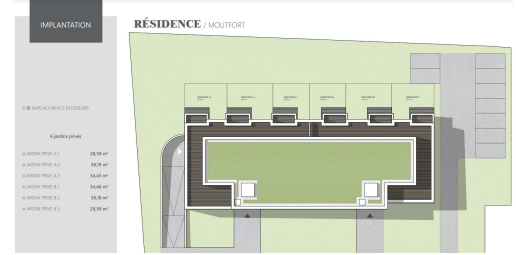


B.2

54,69 m²
surface habitable

1 chambre | 1 jardin privé | 1 terrasse

ENTREE	5,08 m ²
CUISINE/S.A.M./SEJOUR	28,29 m ²
WC	1,73 m ²
SALLE DE BAIN	5,66 m ²
CHAMBRE	13,93 m ²
JARDIN PRIVE TERRASSE	38,18 m ² 10,45 m ²



DESCRIPTION OF THE PROPERTY

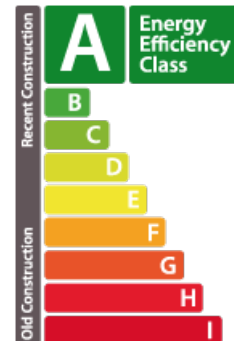
HD33 Real Estate Luxembourg, in collaboration with Capelli S.A., offers you this magnificent 1-bedroom VEFA apartment in Moutfort, in a green and quiet country setting. CONTACT Dino Backes: +352 661 333 370 contact@hd33.lu The B2 apartment is located on the first floor of the "West Valley" residence, with a floor area of approx. 54.69 m² and is divided as follows:- 5.08 m² entrance hall;- A 28.29 m² kitchen opening onto a 10.45 m² south-west-facing terrace;- A 13.93 m² bedroom;- Separate bathroom approx. 5.66 m² ; - Separate WC approx. 1.73 m² ; The apartment also has a private south-west-facing garden of approx. 38.18 m². Grassing and hedges are included in the sale price. In the basement of the residence, there are two stroller rooms (approx. 2.47 m² and 3.14 m²), two bicycle rooms (approx. 14.07 m² and 11.98 m²) and two storage rooms (approx. 2.63 m²). The residence has an elevator, and the property for sale is complemented by a private cellar and a shared laundry room. The "West Valley" res...

SPECIFICATIONS

Number of pieces : -
Nb. of bedroom(s) : 1
Area : 54.69m²
Number of bathrooms : 1
Equipped kitchen : Non

ENERGY PASS

Energy performance



Thermal insulation



✓ Huyghe - Dubois Sàrl

📍 53, Boulevard Royal - 2nd Floor 2449

📞 284 825 086

✉ contact@hd33.lu

🌐 <https://www.hd33.lamano.lu/en/detail-279>