

APPARTEMENT
B.7 v.2

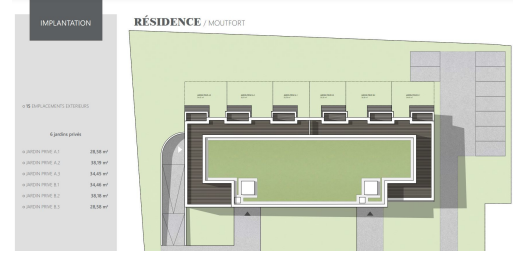
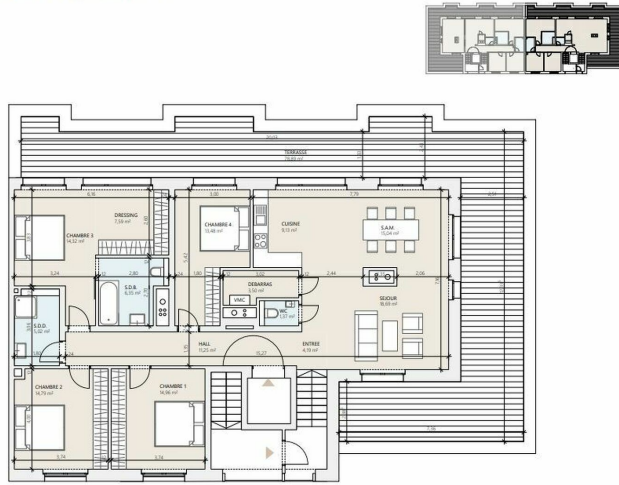
139,68 m²
surface habitable

4 chambres | 1 terrasse

- ENTREE 4,19 m²
- HALL 11,25 m²
- WC 1,37 m²
- DEBARRAS 3,50 m²
- CUISINE 9,13 m²
- S.A.M. 15,04 m²
- SECOUR 18,69 m²
- CHAMBRE 1 14,96 m²
- CHAMBRE 2 14,79 m²
- SALLE DE DOUCHE 5,02 m²
- CHAMBRE 3 14,32 m²
- DRESSING 7,59 m²
- SALLE DE BAIN 6,35 m²
- CHAMBRE 4 13,48 m²
- TERRASSE 78,89 m²

ETA 2

RÉSIDENCE / MOUTFORT



DESCRIPTION OF THE PROPERTY

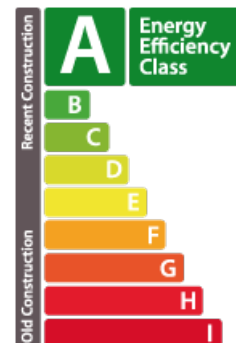
HD33 Real Estate Luxembourg offers you in collaboration with Capelli S.A., this beautiful 4 bedroom penthouse in VEFA in Moutfort in a green and quiet environment of the countryside. The construction work has begun, actable immediately. CONTACT Dino Backes +352 661 333 370 contact@hd33.lu The penthouse B7 is located on the 2nd floor in the residence "West Valley" with an area of approximately 139.68 m² and distributed as follows:- Entrance hall of about 11,25m²;- An entrance of about 4,19 m²;- An open kitchen of about 10 m² and a storage room of about 3,50 m² ; - You will have access to the terrace of about 78,89 m², facing South-West;- A 32 m² dining room and seipour with access to the terrace;- A bedroom of about 14,42 m² ; - A second bedroom of about 14,96 m² ; - A master bedroom of about 21,91 m² with a dressing area and a bathroom of about 6,35 m².-A fourth bedroom of 13,48 m², with an access to the terrace.- A separate shower room of about 5,02 m²; and a separate toilet of 1,35 m²;In th...

SPECIFICATIONS

Number of pieces : -
Nb. of bedroom(s) : 4
Area : 139.68m²
Number of bathrooms : 1
Equipped kitchen : Non

ENERGY PASS

Energy performance



Thermal insulation



✓ **Huyghe - Dubois Sàrl**

📍 **53, Boulevard Royal - 2nd Floor 2449**

📞 **284 825 086**

✉ **contact@hd33.lu**

🌐 **https://www.hd33.lamano.lu/en/detail-284**