

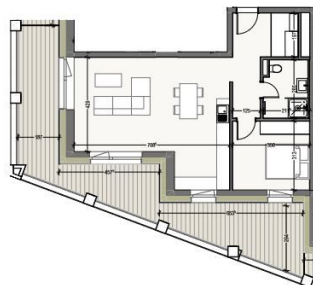
3.2

60,94 m²*
APPARTEMENT 1 CHAMBRE
ÉTAGE 03

CHAMBRE	11,09 m ²
SÉJOUR - CUISINE	34,94 m ²
SALLE DE DOUCHE	5,31 m ²
TERRASSE	3,177 m ²

Face à Sud

* Sur la base des données fournies par le constructeur, les surfaces indiquées ne tiennent pas compte des surfaces communes et des surfaces de circulation. Les surfaces sont exprimées en mètres carrés (m²). Les mesures et superficies globales, nettes, sont exprimées en mètres carrés (m²) dans les documents de référence. Les mesures et superficies globales, nettes, sont exprimées en mètres carrés (m²) dans les documents de référence.



ECH 1/100^e | 1 m | 2 m | 3 m | 4 m | 5 m

SOUTH VILLAGE
HOWALD CITY



DESCRIPTION OF THE PROPERTY

HD33 Real Estate offers you in collaboration with CAPELLI SA the extraordinary and unique project SOUTH VILLAGE in Howald. The key elements of this project are proximity and mobility. Designed with high-standing housing, with an exclusive appeal. The concept is LIVING, SHOPPING, DINNING, WORKING, MOVING. The Howald district is undergoing a metamorphosis and will become the new mixed residential business district, situated between the station area of Luxembourg City and the new business district of the Golden Bell/Gasperich. This area will be connected by the new streetcar route from Findel airport via Kirchberg, city center, train station, Howald and the terminus "cloche d'or" (in the future the streetcar route will continue to Esch-sur-Alzette/Belval). The project is located on the former commercial complex "Howald Retail Park". HD33 offers you this 1 bedroom apartment in Lot 1 3.2 of 60,94m² on the 3rd floor, with a terrace in south-western exposure. The selling price is based on the...

SPECIFICATIONS

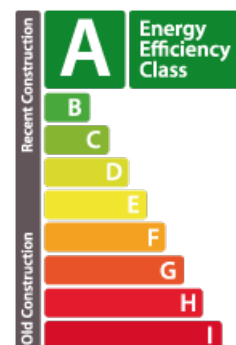
Number of pieces : -
Nb. of bedroom(s) : 1
Area : 60.94m²
Number of bathrooms : -
Equipped kitchen : Non

✓ Huyghe - Dubois Sàrl

📍 53, Boulevard Royal - 2nd Floor 2449
📞 284 825 086
✉ contact@hd33.lu
🌐 <https://www.hd33.lamano.lu/en/detail-368>

ENERGY PASS

Energy performance



Thermal insulation

