

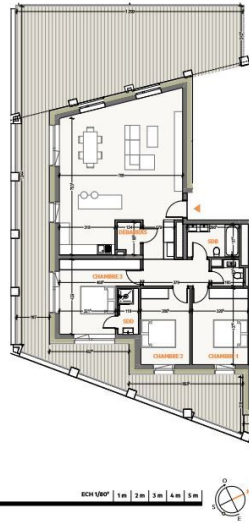
5.1

121,14 m²*

APPARTEMENT 3 CHAMBRES
ETAGE 05

CHAMBRE 1/16,34 m ²	CHAMBRE 3/16,27 m ²
CHAMBRE 2/12,49 m ²	
SÉJOUR - CUISINE	53,78 m ²
SALLE DE BAINS	5,68 m ²
SALLE DE DOUCHE	3,21 m ²
TERRASSE	9,95 m ²

* Sur la base des données fournies par le vendeur, sans garantie de leur exactitude. Les surfaces sont des surfaces brutes et peuvent différer des surfaces utiles. Les surfaces utiles sont des surfaces nettes et peuvent différer des surfaces brutes. Les surfaces utiles sont des surfaces nettes et peuvent différer des surfaces brutes. Les surfaces utiles sont des surfaces nettes et peuvent différer des surfaces brutes.



SOUTH VILLAGE
HOWALD CITY



DESCRIPTION OF THE PROPERTY

HD33 Real Estate offers you in collaboration with CAPELLI SA the extraordinary and unique project SOUTH VILLAGE in Howald. The key elements of this project are proximity and mobility. Designed with high-standing housing, with an exclusive appeal. The concept is LIVING, SHOPPING, DINNING, WORKING, MOVING. The Howald district is undergoing a metamorphosis and will become the new mixed residential business district, situated between the station area of Luxembourg City and the new business district of the Golden Bell/Gasperich. This area will be connected by the new streetcar route from Findel airport via Kirchberg, city center, train station, Howald and the terminus "cloche d'or" (in the future the streetcar route will continue to Esch-sur-Alzette/Belval). The project is located on the former commercial complex "Howald Retail Park". HD33 offers you this 3-bedroom apartment in Lot 1 5.1 of 121,14, on the 5th floor, with a terrace in south-west-east exposure. The sale price is based on the ...

SPECIFICATIONS

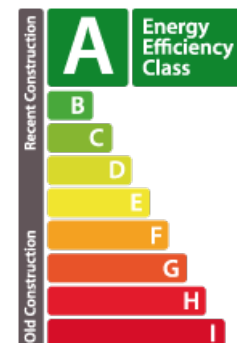
Number of pieces : -
Nb. of bedroom(s) : 3
Area : 121.14m²
Number of bathrooms : 1
Equipped kitchen : Non

✓ Huyghe - Dubois Sàrl

53, Boulevard Royal - 2nd Floor 2449
 284 825 086
contact@hd33.lu
<https://www.hd33.lamano.lu/en/detail-409>

ENERGY PASS

Energy performance



Thermal insulation

A