

5.10

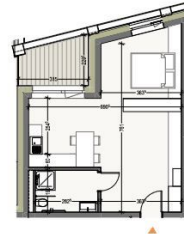
45,42 m²*

STUDIO
ETAGE 05

	SÉJOUR - CUISINE	32,54 m ²
	SALLE DE DOUCHE	5,46 m ²
	TERRASSE	6,00 m ²

Façade Ouest

*Tous les éléments contenus sur ce document sont destinés à être révisés et à être contractés. Les surfaces sont des surfaces nettes et peuvent différer des surfaces constructives qui seront prises en compte lors de la construction. Les surfaces constructives sont des surfaces brutes et comprennent les surfaces des éléments de construction tels que les murs, les planchers, les plafonds, etc. Les meubles et équipements électriques, canalisations, etc. sont représentés à titre indicatif et sont sous réserve de confirmation.



SOUTH VILLAGE
HOWALD CITY



DESCRIPTION OF THE PROPERTY

HD33 Real Estate offers you in collaboration with CAPELLI SA the extraordinary and unique project SOUTH VILLAGE in Howald. The key elements of this project are proximity and mobility. Designed with high-standing housing, with an exclusive appeal. The concept is LIVING, SHOPPING, DINNING, WORKING, MOVING. The Howald district is undergoing a metamorphosis and will become the new mixed residential business district, situated between the station area of Luxembourg City and the new business district of the Golden Bell/Gasperich. This area will be connected by the new streetcar route from Findel airport via Kirchberg, city center, train station, Howald and the terminus "cloche d'or" (in the future the streetcar route will continue to Esch-sur-Alzette/Belval). The project is located on the former commercial complex "Howald Retail Park". HD33 offers you this studio in Lot 1 5.10 of 45,42m² on the 5th floor, with a terrace in south-western exposure. The selling price is based on the super-reduc...

SPECIFICATIONS

Number of pieces : -
Nb. of bedroom(s) : -
Area : 45.42m²
Number of bathrooms : -
Equipped kitchen : Non

✓ Huyghe - Dubois Sàrl

53, Boulevard Royal - 2nd Floor 2449
 284 825 086
contact@hd33.lu
<https://www.hd33.lamano.lu/en/detail-417>

ENERGY PASS

Energy performance



Thermal insulation

