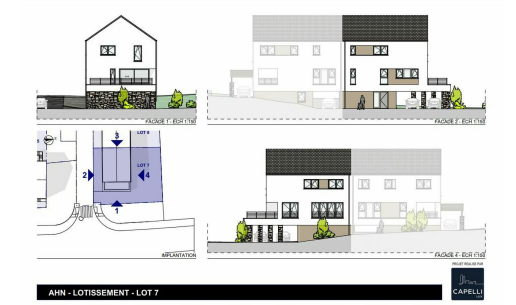




ETAGE	SURFACE
SOL	142,09m ²
PRE-DE-COINCEE	142,09m ²
PRE-DE-COINCEE	142,09m ²
PRE-DE-COINCEE	142,09m ²
PRE-DE-COINCEE	142,09m ²
PRE-DE-COINCEE	142,09m ²
PRE-DE-COINCEE	142,09m ²
PRE-DE-COINCEE	142,09m ²
PRE-DE-COINCEE	142,09m ²
PRE-DE-COINCEE	142,09m ²
PRE-DE-COINCEE	142,09m ²



DESCRIPTION OF THE PROPERTY

HD33 Real Estate offers single-family homes, semi-detached and row houses for sale on the banks of the Moselle. The Millésime project by Constructor Capelli Luxembourg SA is located in Ahn, in the commune of Wormeldange. The commune boasts a relaxing living environment, with a magnificent view of the green German hills, and is only 30 minutes from the Kirchberg Plateau. Lot 7 is a semi-detached house with 142.09 square meters of living space on three floors, including four bedrooms. On the first floor, you'll find an entrance hall leading to the staircase leading to the upper floor, a vast 56-square-meter living room and open-plan kitchen. From the living room, you'll have direct access to the large 26-square-meter terrace, which faces east-south-east and benefits from plenty of sunshine. Then there's a second room of around 15 square meters, which can be used as an office or hobby room. The kitchen area also includes a 7.30 sq. m. room used as a storeroom and laundry room. On the seco...

ENERGY PASS

SPECIFICATIONS

- Number of pieces : -
- Nb. of bedroom(s) : 4
- Area : 142m²
- Number of bathrooms : 1
- Equipped kitchen : Non

✓ **Huyghe - Dubois Sàrl**

📍 **53, Boulevard Royal - 2nd Floor 2449**

☎ **284 825 086**

✉ **contact@hd33.lu**

🌐 **https://www.hd33.lamano.lu/en/detail-637**